

# Net-Zero, From Manufacturer to Main Contractor

Dylan Stoppard & Neave Thompson

# What will we cover in this presentation?



What are  
GHG  
Emissions?

Types of  
Carbon in the  
Built  
Environment

What is  
Net-Zero?

A Net-Zero  
UK

# What will we cover in this presentation?



From the  
Building  
Material



To the

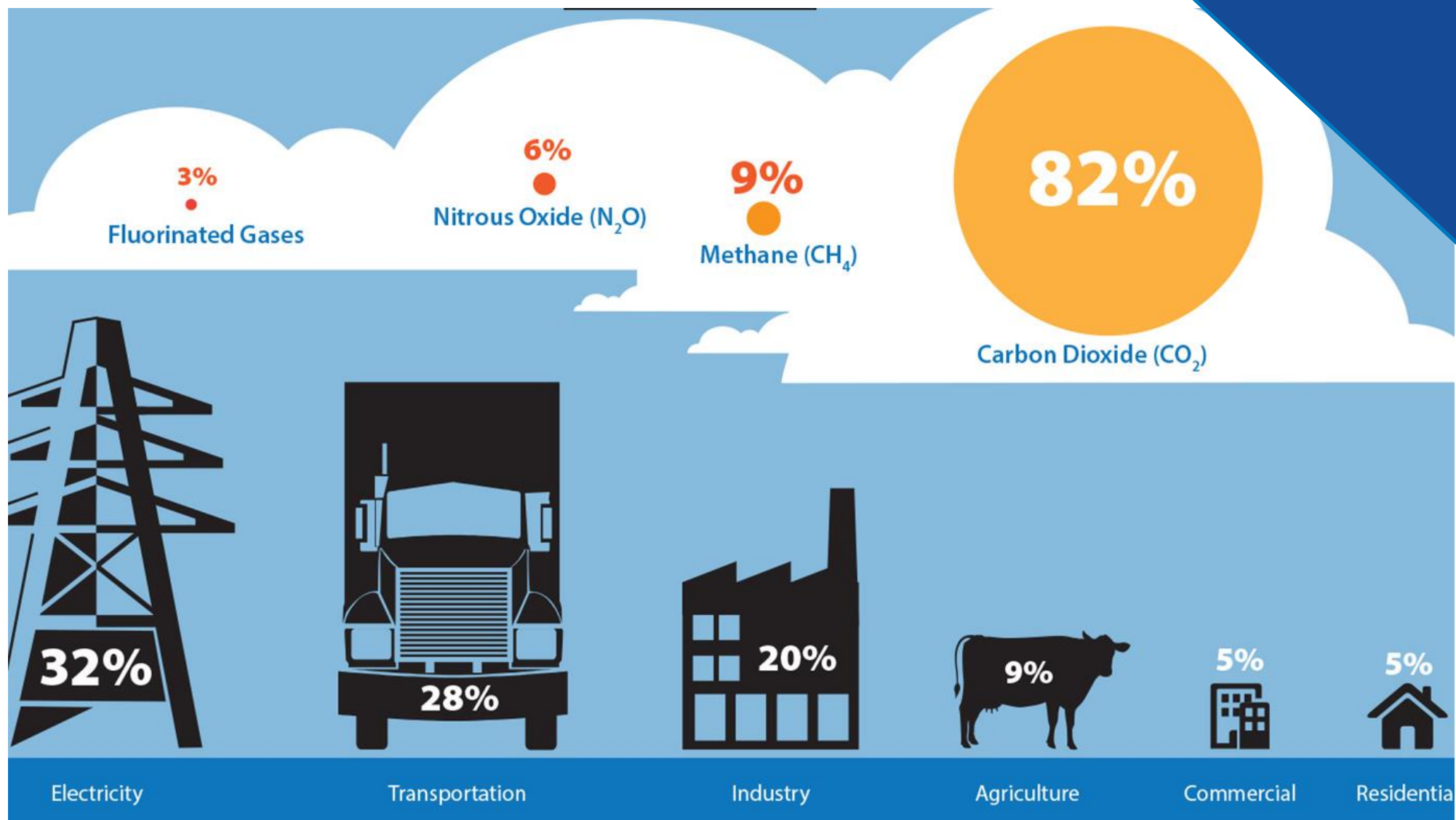


Development

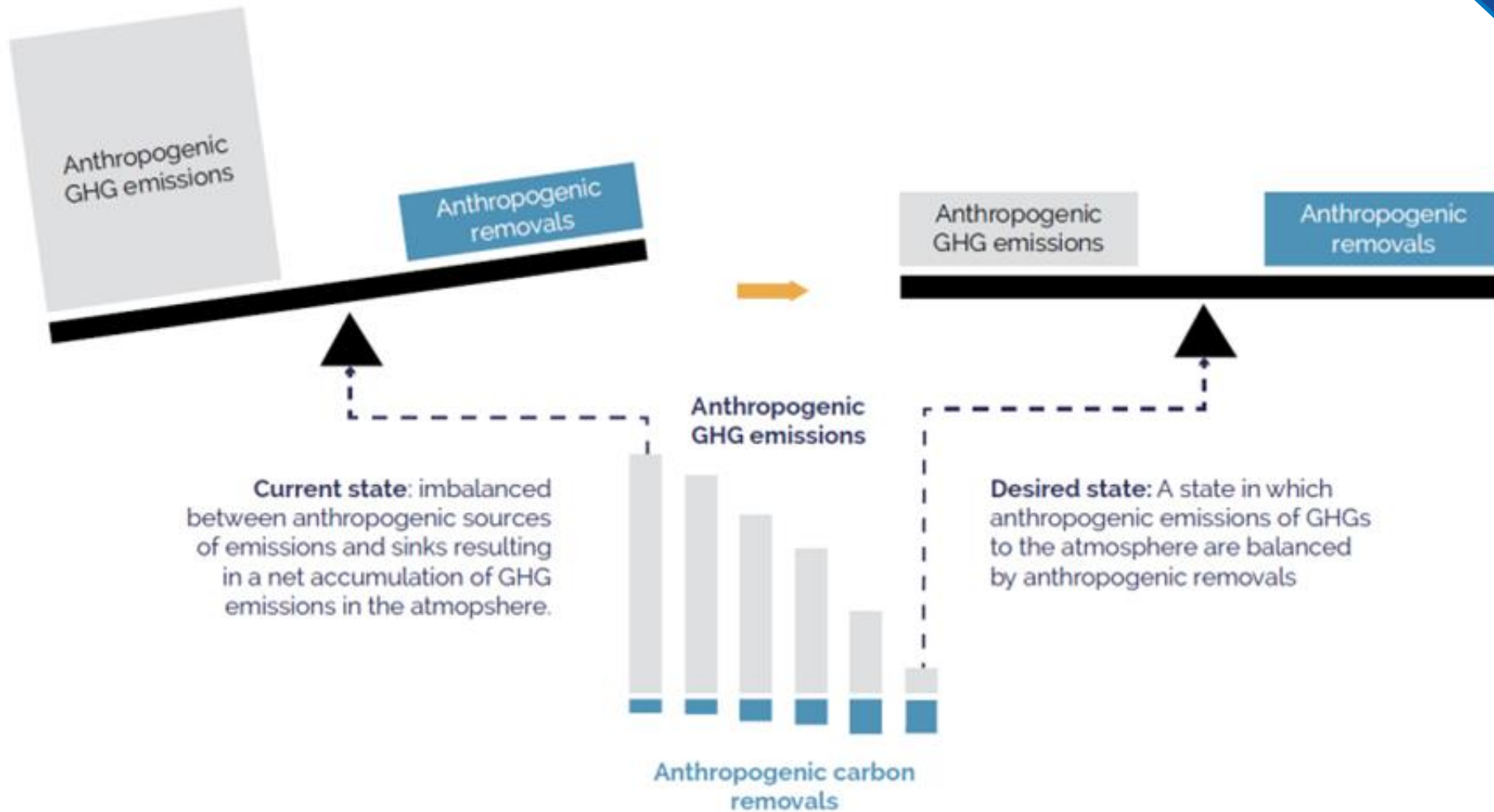
# What are GHG Emissions?

- Gases in the atmosphere that trap heat
- Lead to global warming and climate change
- Negative when we release too many

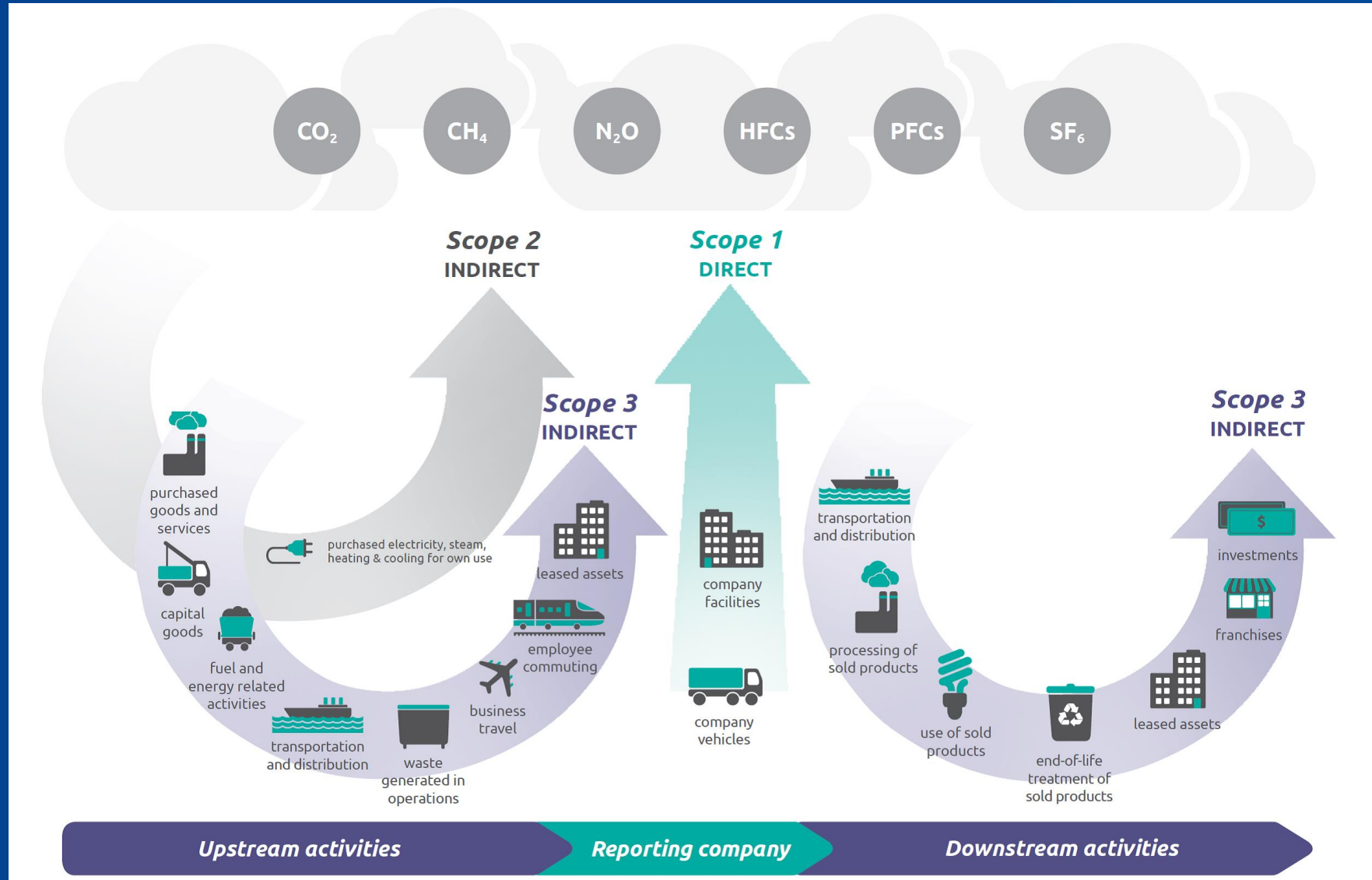




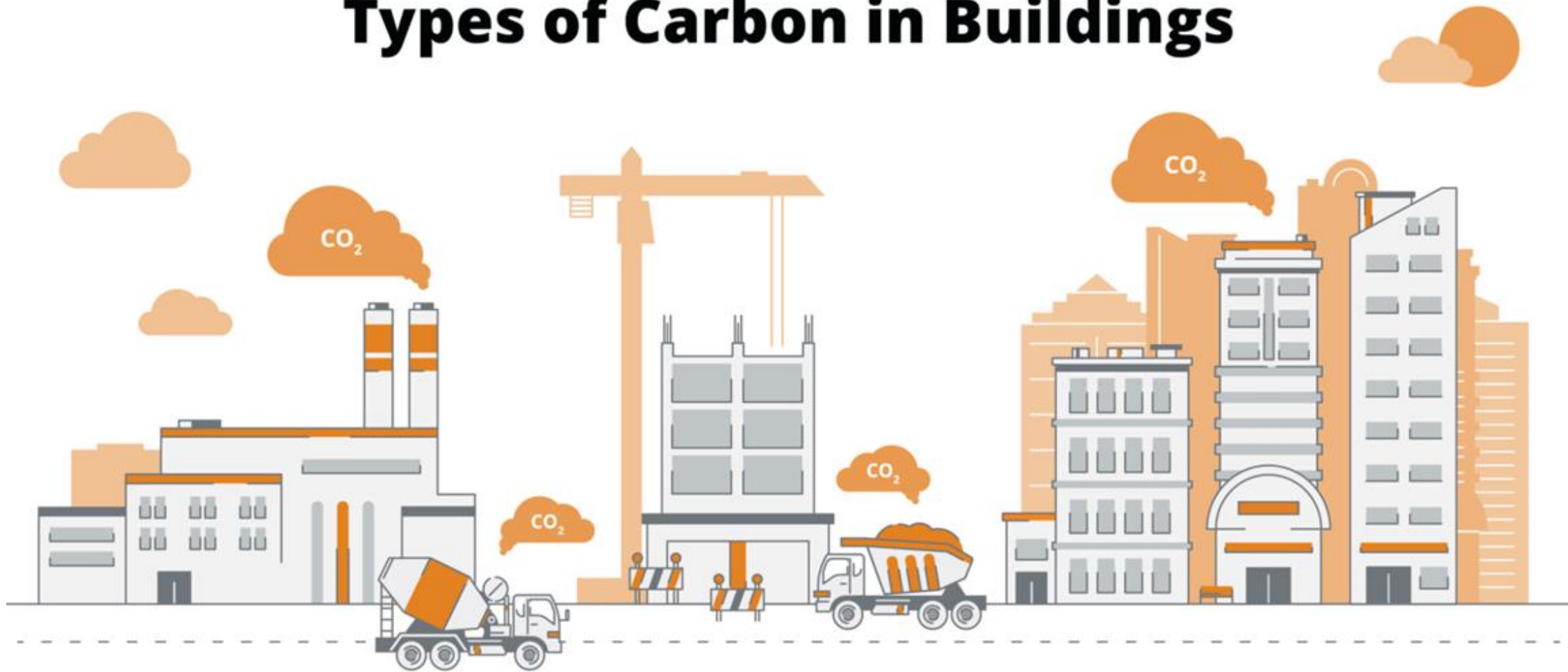
# What is Net-Zero?



# Defining Carbon Emissions, Scope 1, 2 and 3



# Types of Carbon in Buildings



## Embodied Carbon

The emissions from manufacturing, transportation, and installation of building materials.

## Operational Carbon

The emissions from a building's energy consumption.

# A Transition to Net-Zero within the UK Built Environment

## A Net-Zero Transition

- Future homes hub WLC
- Part L/Z WLC
- London Plan and LETI
- Reporting frameworks TCFD
- Market competition



THE  
LONDON  
PLAN



THE SPATIAL DEVELOPMENT

PART Z  
Proposed  
Amendment to  
building  
regulations

part-z.uk  
@part-z.uk  
CalculateEmbodiedCarbon

COMPETITION  
TIME!

# Net-Zero, a Manufacturers Perspective

- Sustainable Building Solutions
- Climate Management Solutions
- Water Management Solutions



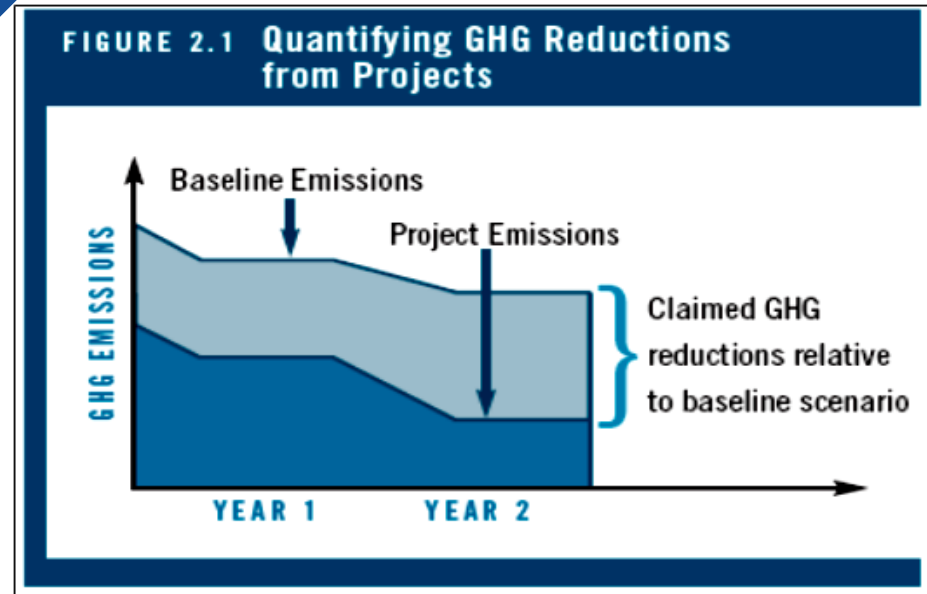
# Moving Towards Net-Zero



- Where are you at?
- Setting Targets
- Executing, Monitoring progress and adapting

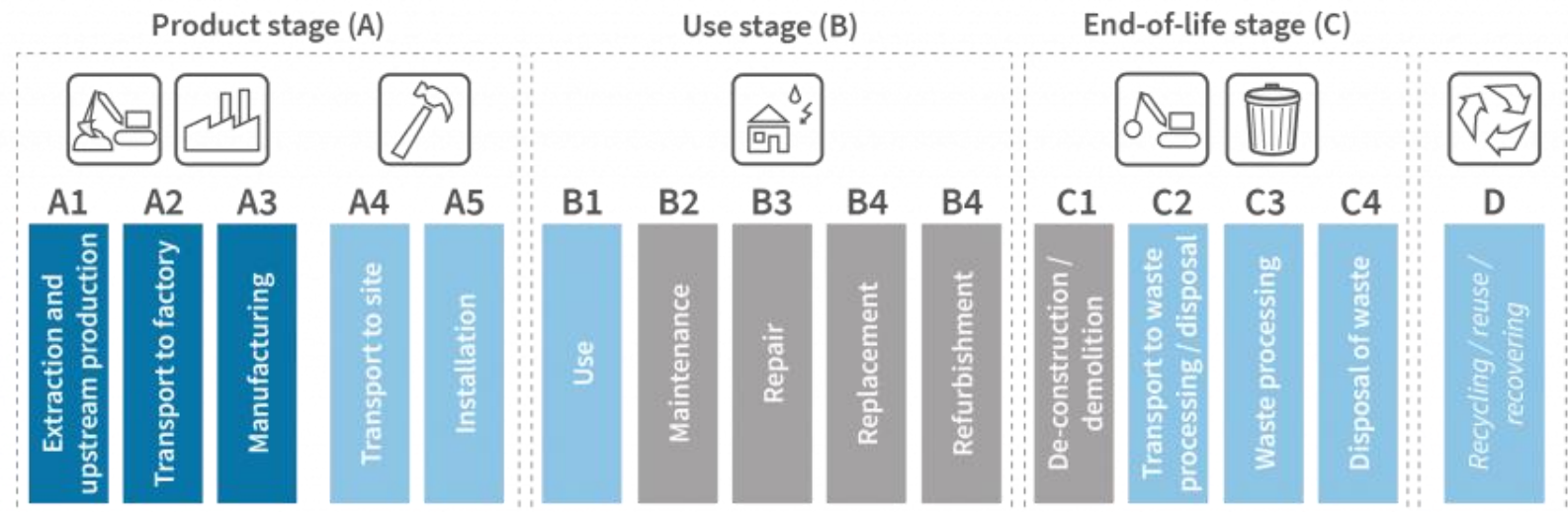
# Know where you are starting from

- Operational Carbon
- Embodied Carbon (product level)



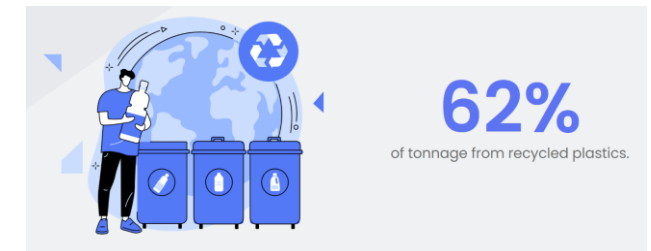
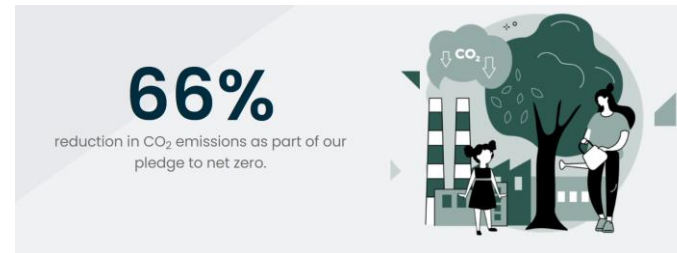
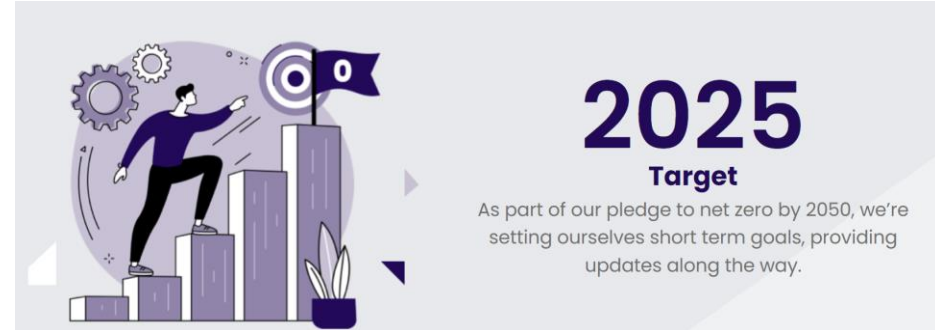
## Life cycle stages included in EPDs

- Required for all EPDs
- Included in some EPDs
- Rarely included in EPDs



# Setting Targets

- Don't strive for perfection
- Its ok not to know all of the answers



DRIVING AMBITIOUS CORPORATE CLIMATE ACTION



# Execution, Monitoring Progress and Adaption

- Using recycled material in our products
- Biodiesel in our HGVs
- Procuring & onsite renewable energy
- Adopted an electric vehicle and hybrid electric car scheme
- Buying more energy efficiency equipment



# Progress

- 49% scope 1 and 2 carbon reduction between 2019-2021
- Reduced our scope 3 carbon impact by over 100,000TCo2e with our use of recycle



# Net-Zero & The Main Contractor

Neave Thompson

